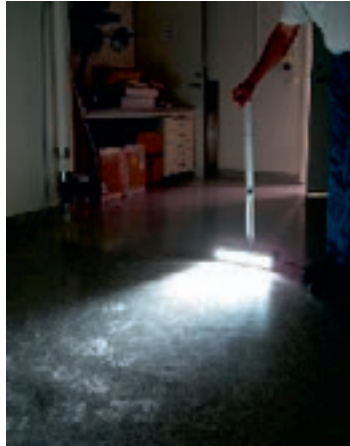


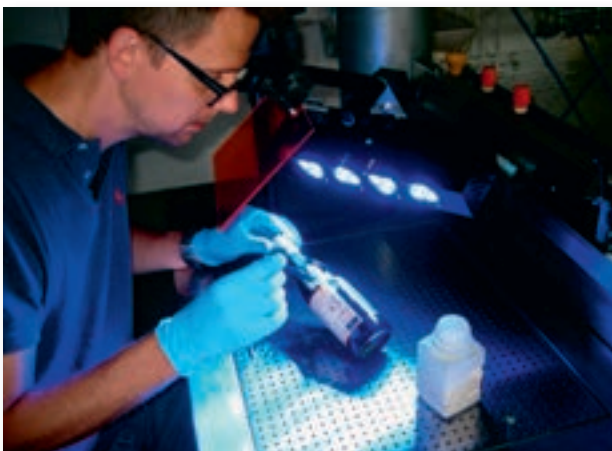
VERSA LIGHT MAX



A multi versatile light system for the crime scene investigator and the laboratory.

Versa Light MAX is two in one - on one side you have 15x3-watt high power LED lamps with white projected light and on the other you have 12x3-watt high power LED lamps with projected blue light (450-460nm).

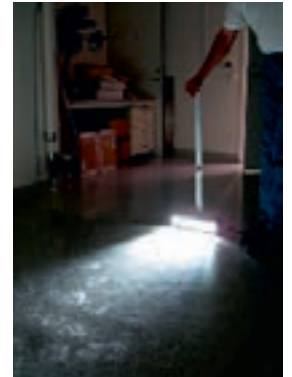
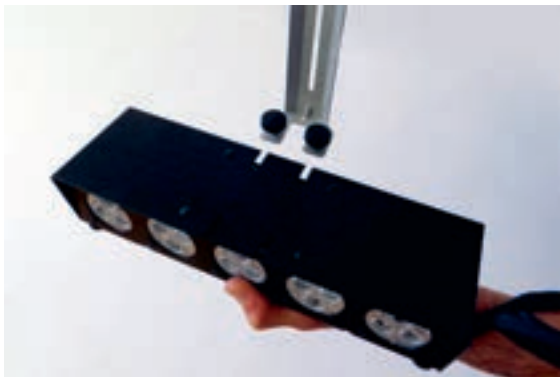
Versa Light MAX is versatile and portable. It can be used as a hand held lamp and also be mounted on a telescope handle for searching shoe prints on the floor. In the system you also have a light stand designed to give you a suitable position of the light source for ultimate photographing result.



VERSA LIGHT MAX - User guide



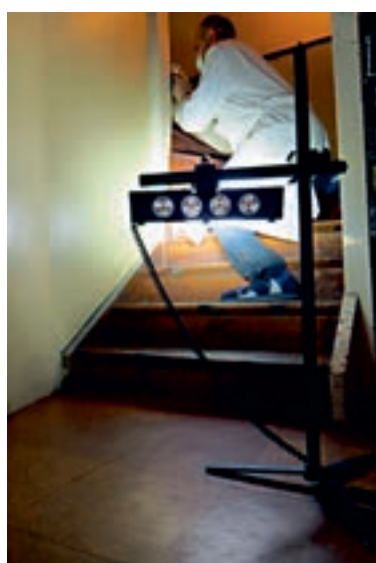
To make Versa Light Max a handheld lamp - the handle is mounted in the slots and locked into place with the two screws. The orange attachable viewing filter is mounted in the same way as the pictures show.



For searching shoe prints with low oblique light - the telescopic handle is mounted in the slots and locked into place with the two screws. The length of the telescopic handle can easily be adjusted by loosening the screws and sliding the handle up or down to an appropriate length.



The diffuser filter is mounted for softer light.



The Versa Light MAX can also be used as work light on the crime scene.



The battery case has a belt-clip for easy carrying.



To assemble the light stand, screw on one of the tripod-stick on the y-shaped feet.



To mount the light source on the stand. Use the large plastic clamp and attach it to the handle which is mounted on the lamp, as illustrated.



The orange viewing filter can also be attached on the stand using the small plastic clamp.



The ball head for camera mounting can be fitted on the light stand.



Photographing shoe prints in dust with low oblique light using the reflecting mirror. The mirror will give you more even light with better contrast.



Adjust the feet on the lamp to get the best angle of the light.



Attach the foot on the mirror as illustrated, use the adjusting screw to find the best reflection.

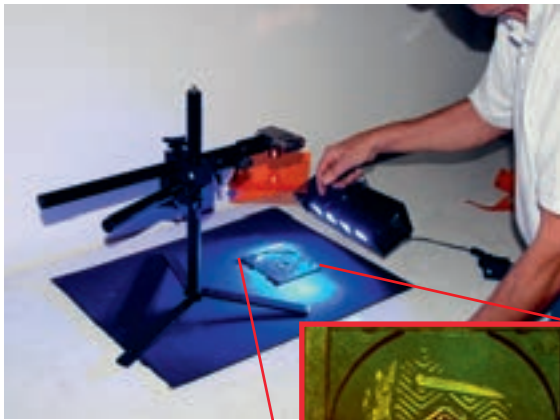
More ways to use the VERSA LIGHT MAX



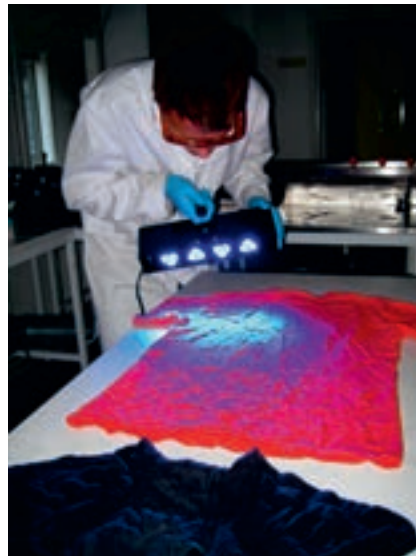
Using the light stand for photographing a gel lifting film with low oblique light



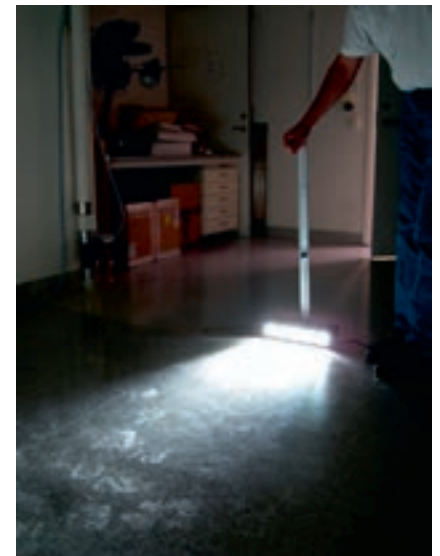
Examining an electrostatic film for shoe prints using the handheld Versa Light MAX



Photographing a shoe print in blood treated with Acid Yellow 7 using the light stand with attached filter and blue light



Searching for fibers and body fluids using the blue light



Using the telescope handle for searching shoe prints with oblique light

Specification

Versa Light MAX lamp white and blue light (450-460nm)
Rechargeable battery Ni-MH 12v 4 Ah. with belt clip
Battery charger
Plug-in transformer 120v or 240v
Light stand with ball head for camera mounting
Handle for Versa Light MAX
Telescope handle for searching shoe print on the floor
Orange attachable viewing filter
Light reflecting mirror
Diffuser filter
Heavy-duty carrying case

